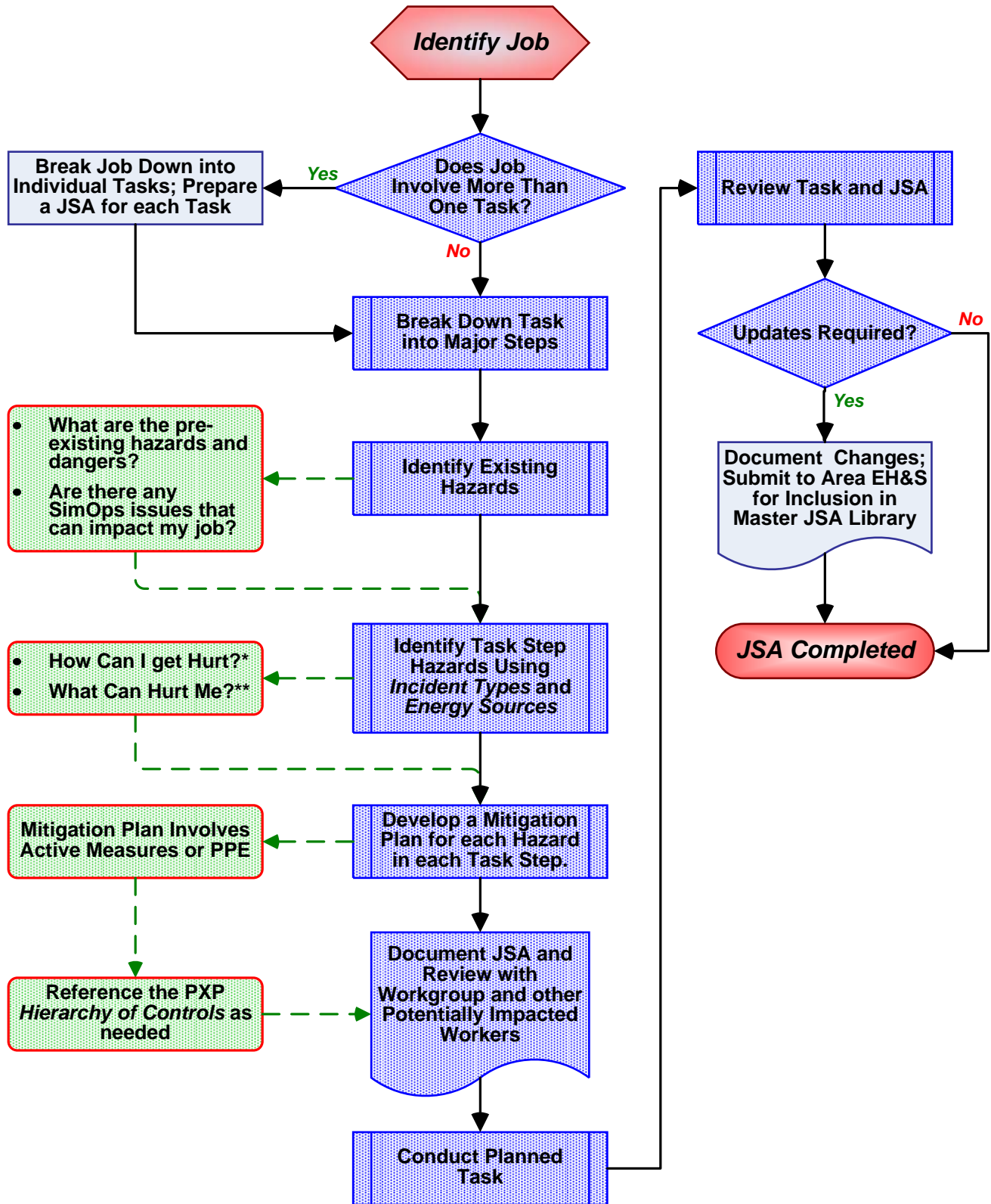


# FM O&G JSA Preparation



## \*Eight Incident Types

- Caught (In, On, Under, Behind)
- Strike (Against or By)
- Contact
- Overexert
- Fall
- Equipment Failure
- Release
- Non-Routine Operation

## \*\*Eight Energy Types

- Electrical
- Pressure
- Gravity
- Chemical
- Energy of Motion
- Heat or Cold
- Biological
- Radiation